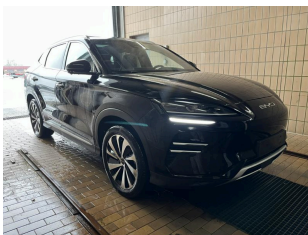
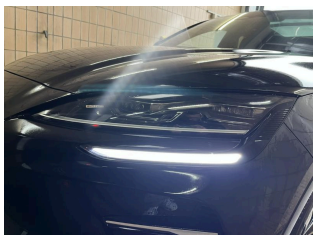


BYD Seal

Seal U Design 87 kWh Elektro 218hp

Electric - Automatic - 5527km - 05/2024

Ref 47326



[All images](#)

BYD Seal

Seal U Design 87 kWh Elektro 218hp

Electric - Automatic - 5527km - 05/2024

Ref 47326

Description

Make	BYD
Model	Seal
Description	Seal U Design 87 kWh Elektro 218hp
Mileage	5527 km
Type	Passenger car
Body type	SUV / Off-Road
Doors	5
Seats	5
Exterior color	Black
Interior color	Beige
Upholstery	Full leather

Technical

Fuel type	Electric	Gears	1
Gearbox	Automatic	Cylinders	0
Cylinder capacity	0 cc	Horse power	218 hp
Power KW	160 kw		
Drive train	Front		

Dimensions

Weight empty	2147 kg
--------------	---------

BYD Seal

Seal U Design 87 kWh Elektro 218hp

Electric - Automatic - 5527km - 05/2024

Ref 47326

Registration and Warranty

First Registration 16-05-2024

Warranty start 16-05-2024

Battery Warranty start 16-05-2024

Options Comfort

Ambient lighting	Armrest
Automatic climate control	Automatically dimming interior mirror
Central locking	Head-up display
Luggage protection cover	Seat driver electrical adjustable
Seat heating front	Seats front electrical adjustable
Sensor rain	Steering power
Glass open roof	

Safety

ABS	Airbag driver
Airbag passenger	Airbags side
Cruise control	Electronic parking brake
Emergency brake assist	Emergency call
ESP	Immobilizer
Isofix	Lane departure warning system
Lights LED	Lights LED daytime running
Parking assist sensor front	Parking assist sensor rear
Speed limit control system	Tire pressure monitoring

Infotainment

DAB radio	Touch screen
USB	Voice control

Extras

Roof rack

Heat pump

BYD Seal

Seal U Design 87 kWh Elektro 218hp

Electric - Automatic - 5527km - 05/2024

Ref 47326

Equipment

Driving mode switch	Snow White metallic paintwork
Child safety lock	Service system: Child Forgetting Detection (CFD)
Front center armrest with cup holder	Driving assistance system: Lane change assistant (LDA)
Automatic locking of luggage compartment / tailgate + doors	Driving assistance system: Front collision warning (FCW)
USB ports (2) at the front	Power steering
Velour floor mats	Driving assistance system: Hill descent assistant
Touchscreen (15.6 inch) electrically rotatable	Rear center armrest with cup holder
Instrument display TFT color display (12.3 inch)	Anti-lock braking system (ABS)
Luggage compartment cover / roller blind	Infinity sound system (10 loudspeakers)
Darkened rear glazing (privacy glass)	Split/folding rear seat backrest (60:40)
Front and rear LED reading lights	Driving assistance system: Hill Start Assist (Hill Holder)
Voice control system	Front side airbag
2-zone automatic air conditioning	Air vents in the rear
Surround View 360° camera system	Front footwell light
Smartphone interface (Apple CarPlay & Android Auto)	Airbag driver/passenger side, passenger airbag can be deactivated
Anti-slip control (ASR)	Driving assistance system: Blind spot warning system for rear door opening
Cruise control system (cruise control) incl. speed limiter system	Heating/air conditioning system: heat pump
LM rims	Steering wheel (leather, vegan) with multifunction
Smart key	Emergency call system
Drive type: Front-wheel drive	Electric motor 160 kW (cont. 70 kW)

Rear parking aid, 4 sensors	Driving assistance system: High beam assistant
USB port in the rear	Driving assistance system: Driver drowsiness detection
Front right seat electrically adjustable (4-way)	Windscreen with heat-insulating glazing and noise insulation
Front seat ventilation	Center front side airbag (center airbag)
LED rear lights, dynamic indicators	Digital radio reception (DAB)
Front left seat electrically adjustable (8-way, with memory)	Driving assistance system: Lane departure warning
Seat cover / upholstery: leather, vegan	Keyless Go locking/starting system
Electron. Brake force distributor (EBD)	Socket (12V connection)
On-board charger 11 kW	Electron. Stability program (ESP)
HV battery 87 kWh	Driving assistance system: Autonomous Emergency Brake Assist (AEB)
Front and rear head/shoulder airbags	Auto-hold function
Light assistant (Coming Home, Leaving Home)	Transmission for electric vehicle
Driving assistance system: Traffic sign recognition (TSR)	Isofix mounts for child seat on rear seat
PM 2.5 air purification system	Driving assistance system: active lane departure warning system (LKA)
Fabric headlining, black	Windshield wipers with rain sensor
Trunk lighting	Induction charging cradle for smartphone
Immobilizer	Rear seat belts with belt tensioners
Cabin air filter 2.5 PM	Driving assistance system: Blind Spot Assist
Sun visors with mirror (illuminated)	Rear side airbag
Interior mirror with automatic dimming	Electrically adjustable, heated and folding exterior mirrors
Hydraulic Brake Assist (HBA)	Panoramic sunroof with electric sun visor
Electric parking brake (EPB)	Front side windows with heat-insulating glazing and noise insulation

Ambient lighting	Satin aluminum roof rails
Front parking aid, 2 sensors	Exterior mirrors with ambient light
Central locking	Driving assistance system: Rear Cross Traffic Collision Warning (RCCW)
Driving assistance system: Rollover protection system	Intelligent Adaptive Cruise Control (I-ACC)
Front head restraints	Isofix mounts for child seat on front passenger seat
Driving assistance system: Emergency Lane Keeping (ELK)	Driving assistance system: Rear collision avoidance (rear collision prevention)
Vehicle-to-load plug (V2L)	Body: 5-door
Anti-theft alarm system	LED headlights
Vehicle Dynamics Control (VDC)	Daytime running lights LED
Heated steering wheel	Electrically operated trunk lid / tailgate (open + close)
Standard wheelbase	Tire pressure monitoring system
Front seat belts with belt tensioners, height-adjustable	Heated front seats
Head-up display	

Image gallery



