

# BMW X5

**X5 xDrive50e xDrive (EURO 6d). 3.0 Plugin Hybrid (Benzin)  
313hp xDrive**

Plug-in Hybrid Gasoline - Automatic - 23621km - 08/2023

Ref 47352

---



[All images](#)

# BMW X5

## X5 xDrive50e xDrive (EURO 6d). 3.0 Plugin Hybrid (Benzin) 313hp xDrive

Plug-in Hybrid Gasoline - Automatic - 23621km - 08/2023 Ref 47352

### Description

Make	BMW
Model	X5
Description	X5 xDrive50e xDrive (EURO 6d). 3.0 Plugin Hybrid (Benzin) 313hp xDrive
Mileage	23621 km
Type	Passenger car
Body type	SUV / Off-Road
Doors	5
Seats	5
Exterior color	White
Interior color	Brown
Upholstery	Full leather

### Technical

Fuel type	Plug-in Hybrid Gasoline		
Gearbox	Automatic	Gears	8
Cylinder capacity	2998 cc	Cylinders	0
Power KW	230 kw	Horse power	313 hp
Drive train	AllWheel		

### Dimensions

Weight empty	2420 kg
--------------	---------

# BMW X5

**X5 xDrive50e xDrive (EURO 6d). 3.0 Plugin Hybrid (Benzin)  
313hp xDrive**

Plug-in Hybrid Gasoline - Automatic - 23621km - 08/2023

Ref 47352

---

## Registration and Warranty

First Registration 23-08-2023

Warranty start 23-08-2023

Battery Warranty start 23-08-2023

## Options Comfort

Ambient lighting

Seat heating front

Seats front electrical adjustable

Start/stop system

## Safety

Alarm

Lights LED

Tire pressure monitoring

## Infotainment

DAB radio

## Extras

Roof rack

Sport seats

# BMW X5

## X5 xDrive50e xDrive (EURO 6d). 3.0 Plugin Hybrid (Benzin) 313hp xDrive

Plug-in Hybrid Gasoline - Automatic - 23621km - 08/2023

Ref 47352

### Equipment

Service system: Intelligent emergency call incl. TeleServices

Induction charging cradle for smartphone (wireless charging)

Innovation package: Parking assistant package Professional, Headlights LED with adaptive light distribution, Sound system Harman-Kardon, BMW Live Cockpit Professional, Driving assistance system: BMW gesture control, Driving assistance system: Driving Assistant, Driving assistance system: Lane change assistant, Driving assistance system: Speed limit display, Driving assistance system: Collision warning system with brake function, Driving assistance system: Cross traffic assistant, Driving assistance system: Lane change warning system

Air suspension with level control

Alpine white paintwork (uni)

Velour floor mats

Lumbar support, front left seat

Sun protection glazing (darkened at the rear)

Luggage compartment partition (net)

Interior: Fineline fine wood

Driving assistance system: Active Guard (Brake Assist)

Comfort access (opening and closing system)

Adaptive suspension M-Technic

Anti-theft device for wheels (rim locks)

BMW front sports seats, electrically adjustable (left with memory)

HiFi loudspeaker system

Fast charging device Flexible Fast Charger (Mode 2)

Engine 3.0 ltr. - 230 kW (system: 360 kW) Hybrid: Hybrid 360 kW (engine 3.0 ltr. - 230 kW)

Active Protection safety system

LM rims

Exterior Line satin aluminum BMW Individual

Driving assistance system: High beam assistant

Start/stop system (function)

Drive type: All-wheel drive

Steering wheel (sport/leather) with multifunction	Sport-Automatic transmission - with Steptronic (8-speed)
Brake energy recovery (recuperation system)	Equipment package: Connected Professional
Exterior equipment: Shadow-Line	BMW IconicSounds Electric (sound generator)
Petrol particulate filter (OPF)	Comfort seats front electr. adjustable (with memory)
Model upgrade	Seat cover / upholstery: Sensafin man-made leather
Charging cable (5.0 m) with type 2 plug (mode 3, 22 kW)	Low-emission according to Euro 6d emissions standard
Trailer coupling (swivel ball head)	Warning triangle
BMW Live Cockpit Plus	Headlining Alcantara / anthracite
DAB tuner (digital radio reception)	Drive type: xDrive (all-wheel drive)
Ambient lighting	Electric motor 145 kW (hybrid drive)
Satin aluminum roof rails	Metallic paintwork
Service system: Legal emergency call	Comfort package: Heat comfort package front, Seat heating front + rear, Cup holder with cooling function / heating function
Interior: Individual piano lacquer interior trim	Body: 5-door
BMW front sports seats	Alarm system
Personalization system (Personal eSIM)	Parking assistant package
Acoustic pedestrian protection (exterior sound)	Service system: ConnectedDrive Services
Exterior mirror package (extended)	Standard wheelbase
Tire pressure monitoring system	Heated front seats
Active front seat ventilation	

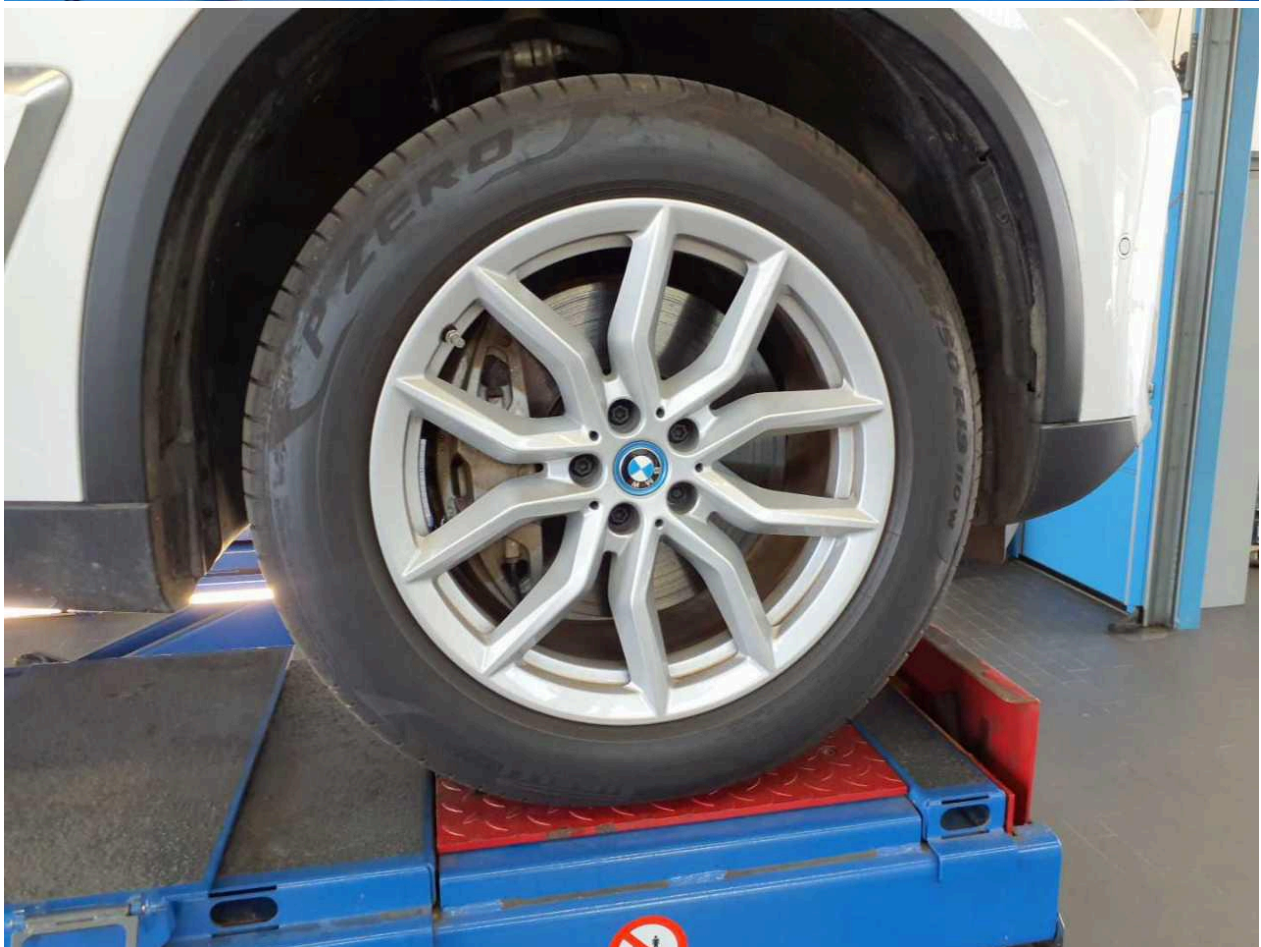
## Image gallery

















**Zulassungsbescheinigung Teil I**  
(Fahrzeugschein)

1. F-S-0-236/23-00096  
Europäische Gemeinschaft (D) Bundesrepublik Deutschland

2. 24.08.2023 0005 DJM000050

3. M1G AC

4. WBA41EU0709S70583 1

5. BMW

6. G5X

7. 41EU

8. IAA5000A

9. X5 xDrive50e

10. BAYER.MOT.WERKE-BMW

11. Geländefz.Pers.bef.

12. Kombilimousine

13. 715/2007\*2018/1832AP

14. EURO6;WLTP;AP;PL/CI; M, N1 I

15. Hybr.B/E ext.auf1.

16. 0025 36AP 2998

17. 7.2/8.2: +190 B.ANHÄNGEBETRIEB \*WW.AHK LT.EGTG \*FZ IST BEI WERKSSEITIG MONTIERT. AHK M.SPEZ.FAHRDYN.STABI.SY ST.F.ANH.BETR.F.TEMPO 100 KM/H GEM. 5.ÄND.VO Z. 9.AUSN .VO.Z.STVO AUSGESTATTET \*ZU P2/P4: 57 KW/30MIN; NENNLE ISTUNG 145 KW \*

18. 2 2 230/5500 250

19. 4935-4935 2004-2004

20. 1755-1755 2495-2495

21. 18 3200 3200

22. 1400 1875

23. 1400 1875

24. 74 3750 67

25. 2700 750 5

26. 265/50 R19 110W

27. 265/50 R19 110W

28. Weiß

29. e1\*2007/46\*1918\*15

30. 29.03.2023 K GS660793

31. F OF 191 E

32. Deutsche Bahn Connect GmbH

33. Mainzer Landstraße 169 60327 Frankfurt am Main

34. Frankfurt am Main

35. 08/2026 24.08.2023





