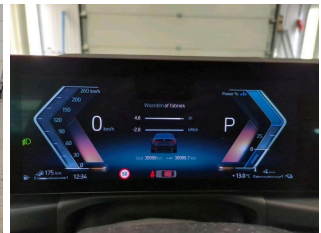
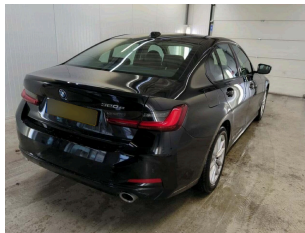
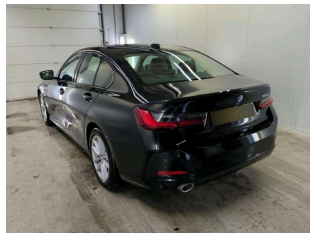
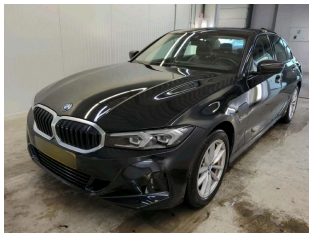


BMW 320

3er - 320 e (OPF)(EURO 6d) 2.0 Plugin Hybrid (Benzin) 163hp

Plug-in Hybrid Gasoline - Automatic - 38999km - 09/2023

Ref 47332



[All images](#)

BMW 320

3er - 320 e (OPF)(EURO 6d) 2.0 Plugin Hybrid (Benzin) 163hp

Plug-in Hybrid Gasoline - Automatic - 38999km - 09/2023

Ref 47332

Description

Make	BMW
Model	320
Description	3er - 320 e (OPF)(EURO 6d) 2.0 Plugin Hybrid (Benzin) 163hp
Mileage	38999 km
Type	Passenger car
Body type	Sedan
Doors	4
Seats	5
Exterior color	Black
Interior color	Brown
Upholstery	Full leather

Technical

Fuel type	Plug-in Hybrid Gasoline	Gears	8
Gearbox	Automatic	Cylinders	0
Cylinder capacity	1998 cc	Horse power	163 hp
Power KW	120 kw		
Drive train	Rear		

Dimensions

Weight empty	1845 kg
--------------	---------

BMW 320

3er - 320 e (OPF)(EURO 6d) 2.0 Plugin Hybrid (Benzin) 163hp

Plug-in Hybrid Gasoline - Automatic - 38999km - 09/2023

Ref 47332

Registration and Warranty

First Registration 07-09-2023

Warranty start 07-09-2023

Battery Warranty start 07-09-2023

Options Comfort

Armrest	Automatic climate control
Mirrors electrical adjustable	Sensor rain
Start/stop system	Steering power

Safety

ABS	Airbag driver
Airbag head	Airbag passenger
Airbags side	Alarm
Electronic parking brake	Isofix
Lane departure warning system	Lights LED
Parking assist camera	Tire pressure monitoring

Infotainment

DAB radio

Extras

Sport seats

BMW 320

3er - 320 e (OPF)(EURO 6d) 2.0 Plugin Hybrid (Benzin) 163hp

Plug-in Hybrid Gasoline - Automatic - 38999km - 09/2023

Ref 47332

Equipment

Driving assistance system: Driving experience switch	Isofix mounts for child seat
Front seat backrest width adjustment	Dynamic Traction Control (DTC)
Parking assistant package: Driving assistance system: Parking assistant, Driving assistance system: Side parking aid, Reversing camera, Driving assistance system: Reversing assistant, Driving assistance system: Reversing aid emergency braking function (Active PDC)	Mirror package: Exterior mirrors electr. folding, exterior mirrors with automatic kerb control, right, interior mirror with automatic dimming
Velour floor mats	Cruise control system with brake function
Brake assistant	Anti-lock braking system (ABS)
Front sports seats	Electric parking brake
Dynamic Stability Control (DSC)	Front side airbag
3-zone automatic air conditioning with automatic air recirculation control	Anti-theft device for wheels (rim locks)
Speed limit device (speed limiter)	LED headlights: LED daytime running lights, LED indicators
Driving assistance system: Attention Assist	On-board computer
Body: 4-door	Storage package
LM rims	Hybrid 150 kW (engine 2.0 ltr. - 120 kW)
Folding rear head restraints	Front footwell lighting
Roof trim in body color	Start/stop system (function)
Dynamic Stability Control (DSC) with extended scope	Steering wheel (sport/leather) with multifunction
Driving assistance system: Active Guard Plus (lane departure warning, forward collision warning): Driving assistance system: Speed limit display, Driving assistance system:	Luggage compartment lighting

Traffic sign recognition with speed limit assistant

Rear head airbag system

Interior: Interior trim quartz silver matt grained

LED rear lights

Petrol particulate filter (OPF)

Model upgrade

Load-through device (rear center armrest)

Rear side airbag

DAB tuner (digital radio reception)

Remote unlocking tailgate

Metallic paintwork

Service system: eDrive Services

First aid kit / first aid kit

Electrically adjustable and heated exterior mirrors

Equipment package: Connected Professional: Service system: Remote Services

Alarm system

Acoustic pedestrian protection (exterior sound)

Tire pressure monitoring system

Park Distance Control (PDC) front and rear

Seat cover / upholstery: Hevelius fabric

Airbag driver/passenger side

Automatic transmission - with Steptronic and shift paddles (8-speed)

Exterior mirrors in body color: Indicator light integrated in exterior mirror

Low-emission according to Euro 6d emissions standard

Warning triangle

Airbag passenger side can be switched off

Seat cover / upholstery: Vernasca leather with decorative stitching

Exterior equipment: Shadow-Line high gloss

Dynamic brake light

Power steering Servotronic

Tinted heat protection glazing: windscreen (climate comfort version)

Front head airbag system

BMW Live Cockpit Plus: Service system: Intelligent Emergency Call incl. TeleServices, Service system: BMW Intelligent Personal Assistant, BMW Curved Display

Charging cable with earthed plug

Light and rain sensor

Image gallery



