

# Suzuki Across

## GLX 2.5 AWD 7HYB ECVT

Plug-in Hybrid Gasoline - Automatic - 36032km - 12/2023

Ref 57768



[All images](#)

# Suzuki Across

## GLX 2.5 AWD 7HYB ECVT

Plug-in Hybrid Gasoline - Automatic - 36032km - 12/2023

Ref 57768

### Description

Make	Suzuki
Model	Across
Description	GLX 2.5 AWD 7HYB ECVT
Mileage	36032 km
Type	Passenger car
Body type	SUV / Off-Road
Doors	5
Seats	5
Exterior color	Silver
Interior color	Black
Upholstery	Part leather

### Technical

Fuel type	Plug-in Hybrid Gasoline		
Gearbox	Automatic	Gears	7
Cylinder capacity	2487 cc	Cylinders	4
Power KW	136 kw	Horse power	185 hp
Drive train	AllWheel		

### Dimensions

Weight empty	2015 kg
--------------	---------

# Suzuki Across

## GLX 2.5 AWD 7HYB ECVT

Plug-in Hybrid Gasoline - Automatic - 36032km - 12/2023

Ref 57768

---

## Registration and Warranty

First Registration 27-12-2023

Warranty start 27-12-2023

Warranty end 27-12-2030

Warranty length 84 months

Mileage limit 150000 km

Battery Warranty start 27-12-2023

## Options

### Comfort

Automatically dimming interior mirror	Central locking
Electric tailgate	Electric windows front
Electric windows rear	Hill hold assist
Mirrors electrical adjustable	Mirrors heated
Outside temperature gauge	Seat driver electrical adjustable
Seat heating front	Seat heating rear
Seats leather	Seats manual lumbar support
Seats rear folding	Sensor rain
Shift paddles	Soft close doors
Armrest	Start and entry keyless
Steering power	Steering wheel heated
Steering wheel leather	Automatic climate control
Automatic gearbox	Mirrors electrical folding

### Safety

Traffic sign recognition	Parking assist camera
ABS	Airbag curtain
Airbag driver	Airbag passenger
Airbags rear	Alarm
Blind spot monitor	Cruise control adaptive
Electronic parking brake	Emergency brake assist

Emergency call  
Fog lights  
Immobilizer  
Lane departure warning system  
Lights LED  
Parking assist sensor front  
Speed limit control system  
Traction control

ESP  
High beam assist  
Isofix  
Lights automatic  
Lights LED daytime running  
Parking assist sensor rear  
Tire pressure check

## **Infotainment**

Apple CarPlay / Android Auto  
Multifunctional steering wheel  
Radio  
Traffic information  
Voice control  
Bluetooth

DAB radio  
On-board computer  
Touch screen  
USB  
WLAN / WiFi hotspot

## **Extras**

Alloy wheels  
Roof rack  
Tinted windows  
Single phase charging cable

Metallic color  
Spare wheel  
Tires summer  
4x4

# Suzuki Across

## GLX 2.5 AWD 7HYB ECVT

Plug-in Hybrid Gasoline - Automatic - 36032km - 12/2023

Ref 57768

---

## Equipment

## Image gallery

























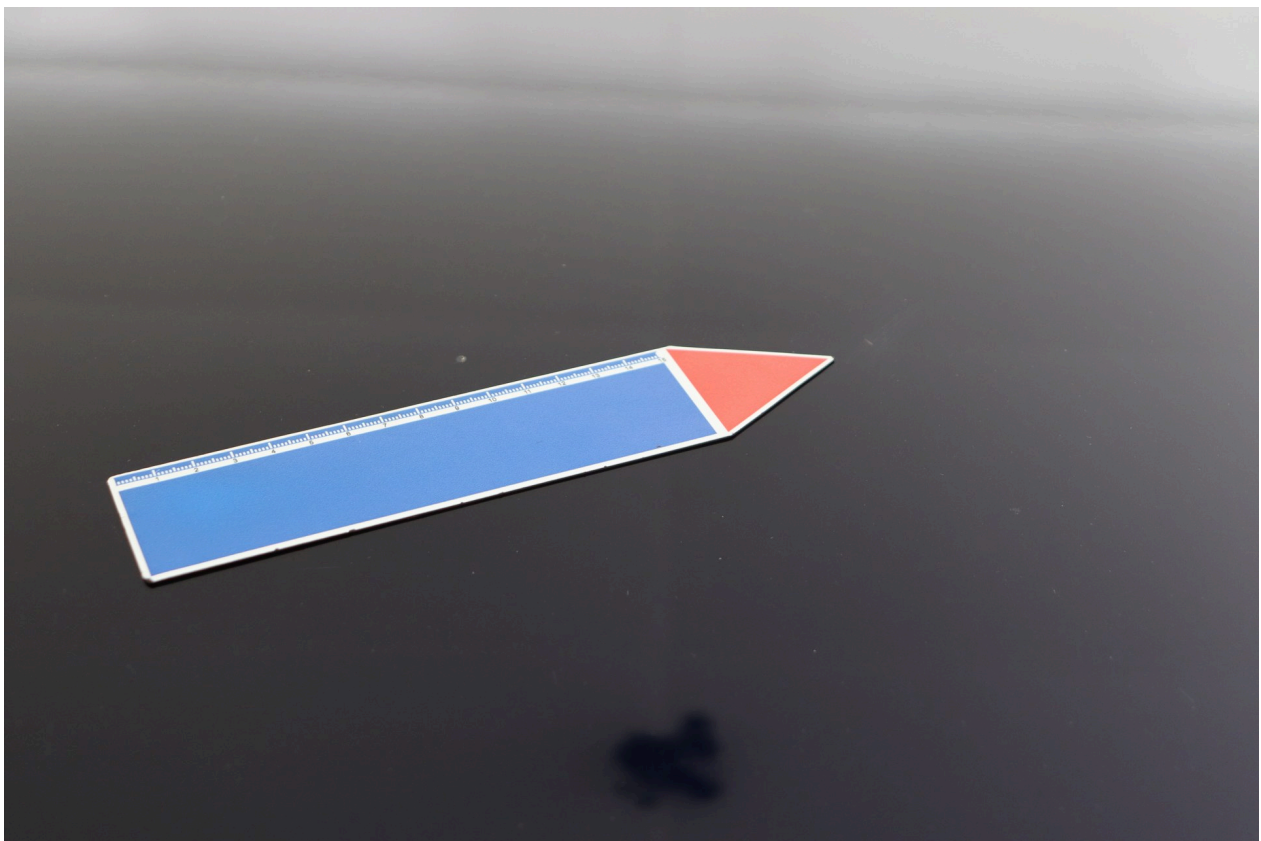










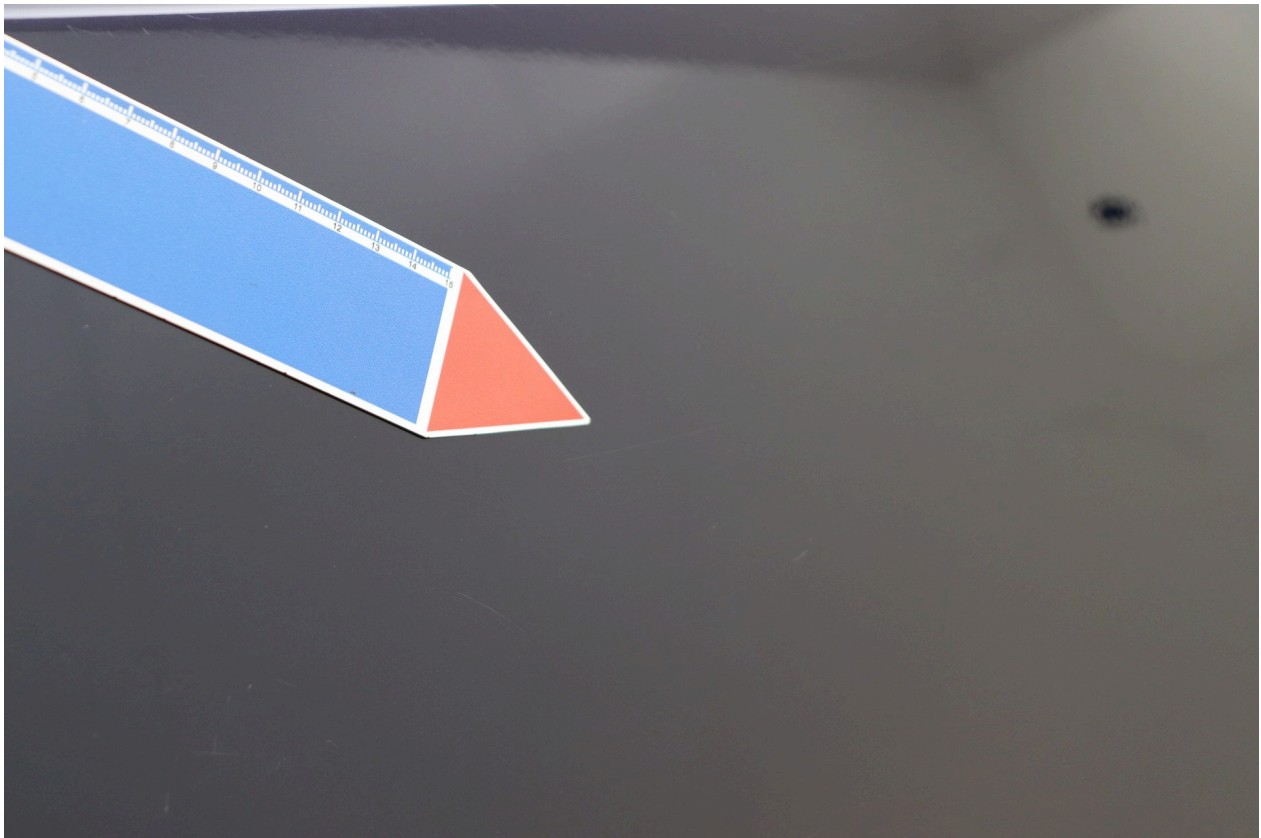
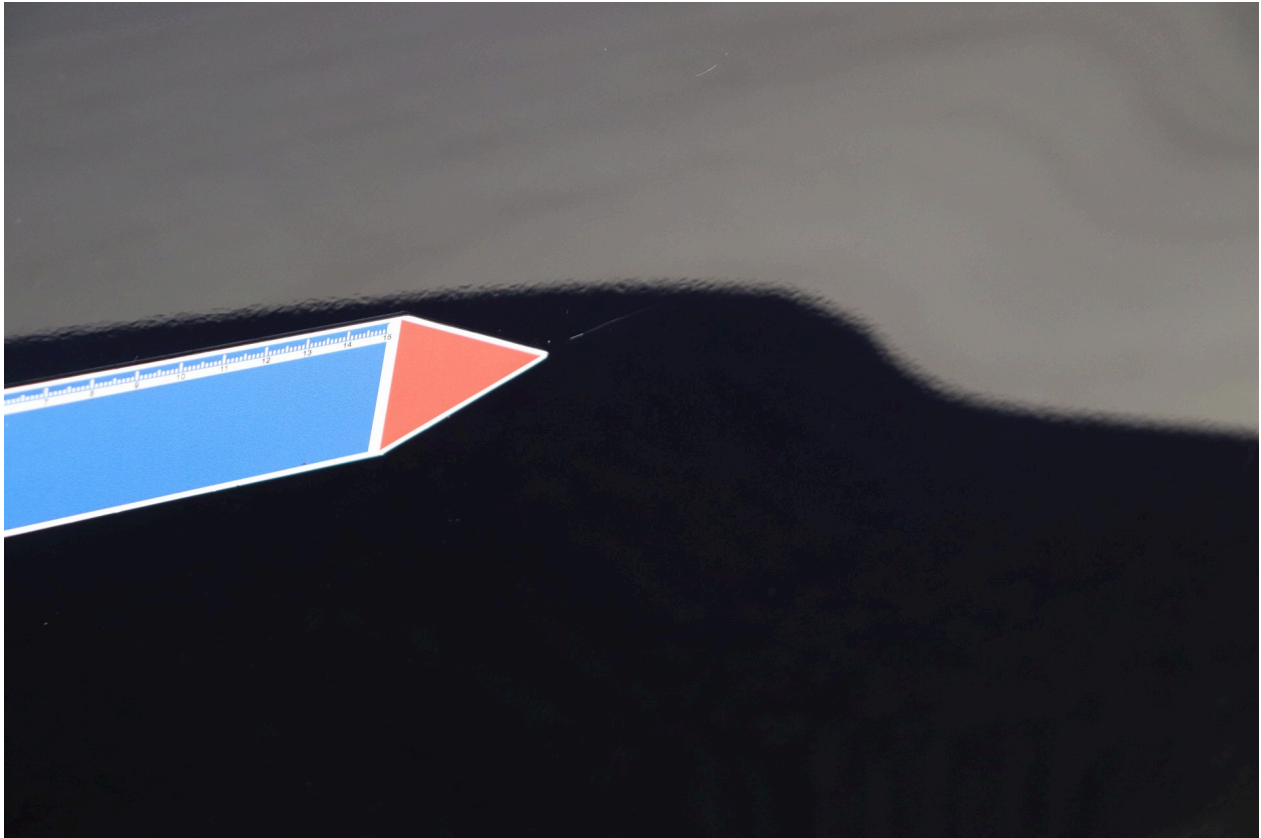








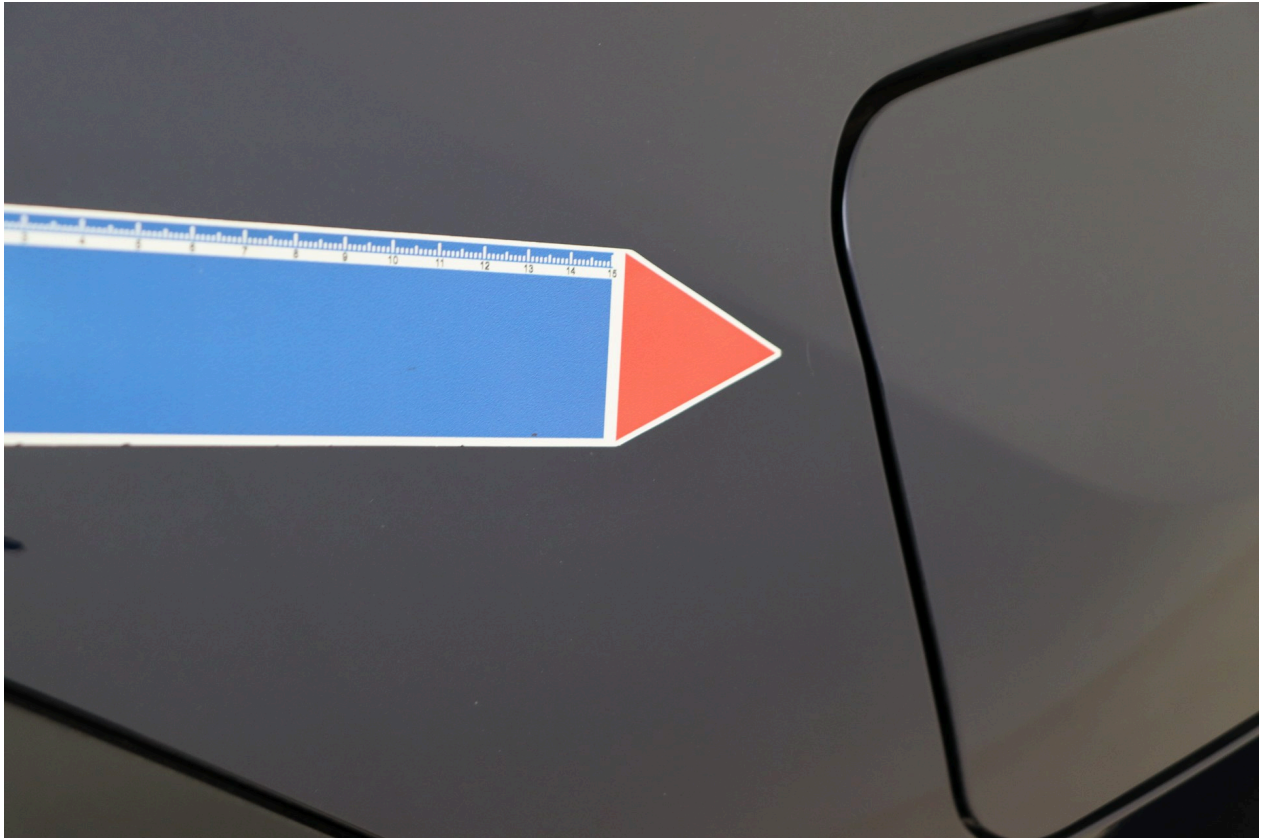














# BATTERY CERTIFICATE PREVIEW

CERTIFICATE NUMBER: FB8A8F97-74F1-4A6A-\*\*\*\*-\*\*\*\*\*



VEHICLE

**BRAND:** Suzuki

**MODEL:** Across 2.5 PHEV - 18,1 kWh

**MILEAGE:** 36,033 km

**DATE AND TIME:**  
25/03/2026, 12:51

**EXECUTED BY:** Cars International



RESULTS

## STATE OF HEALTH (SOH)

# 95.3 %

ENERGY 16kWh | 17kWh



WLTP RANGE 71km | 75km

CHECKS

- Battery Management System (BMS) ✓
- Battery Sensor ✓
- Battery Measurements ✓
- Battery Cell Voltages ✓
- Vehicle Communication ✓

EVALUATION

## EXCELLENT HEALTH - NO ABNORMALITIES DETECTED

Based on the detailed battery diagnostics performed with the AVILOO FLASH Test, we hereby certify that the drive battery of this vehicle is in excellent condition. The drive battery is therefore officially AVILOO Certified.

Dr. Marcus Berger, CEO



For more information about this test, visit [aviloo.com/ft-preview](https://aviloo.com/ft-preview)  
Scan the QR code to get the original report